



Fountain St

Fairmont St

Hillside St

Guilford Ave

Guilford Ave

Guilford Ave

Wilson St

Wilson St

W Friendly Ave

Wilson St

W Market St

Prescott St

Bellemeade St

N Cedar St

Bellemeade St

N Spring St

N Cedar St

Guilford Ave

N Spring St

W Friendly Ave

N Cedar St

N Spring St

W Market St



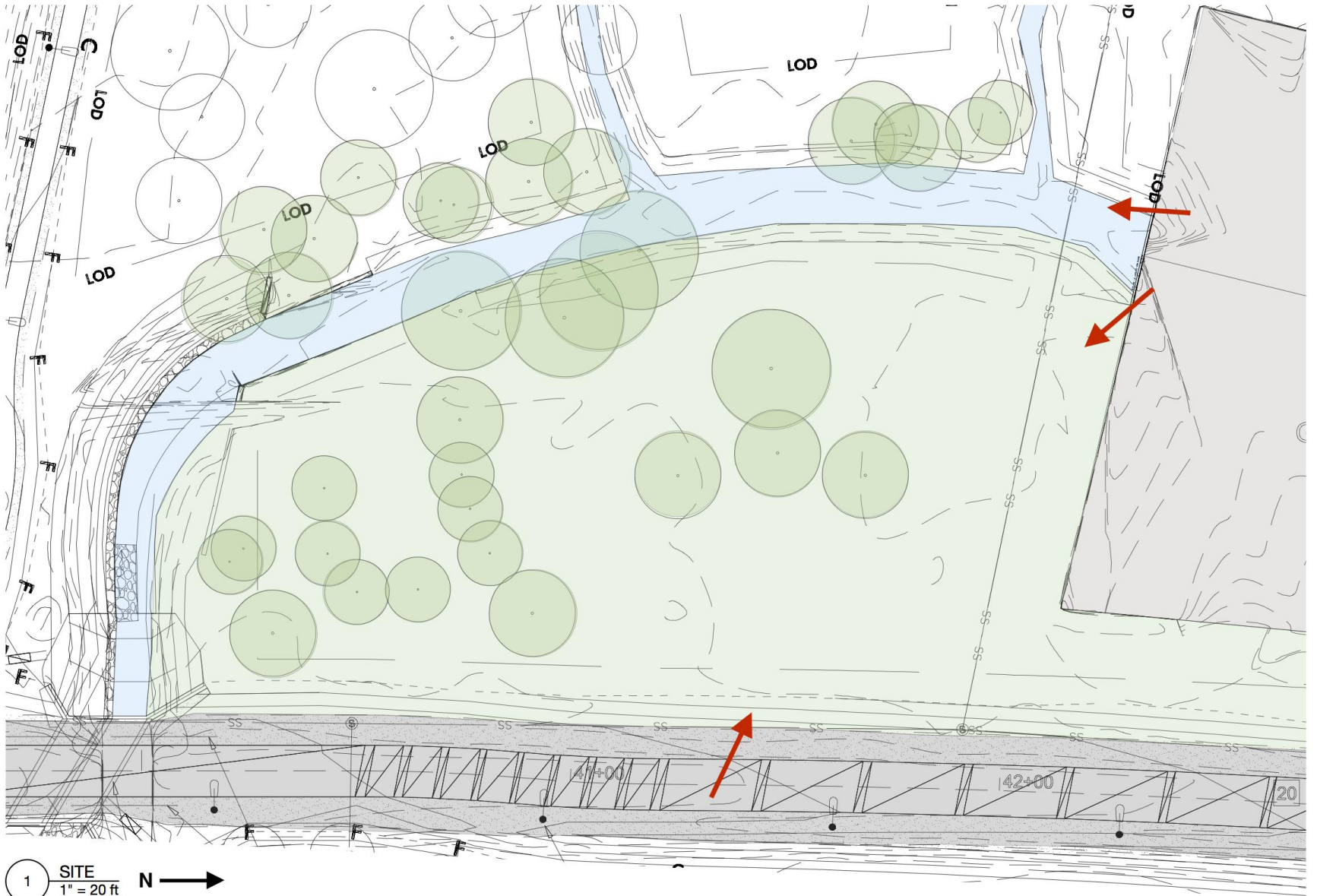


1 SITE
1" = 20 ft



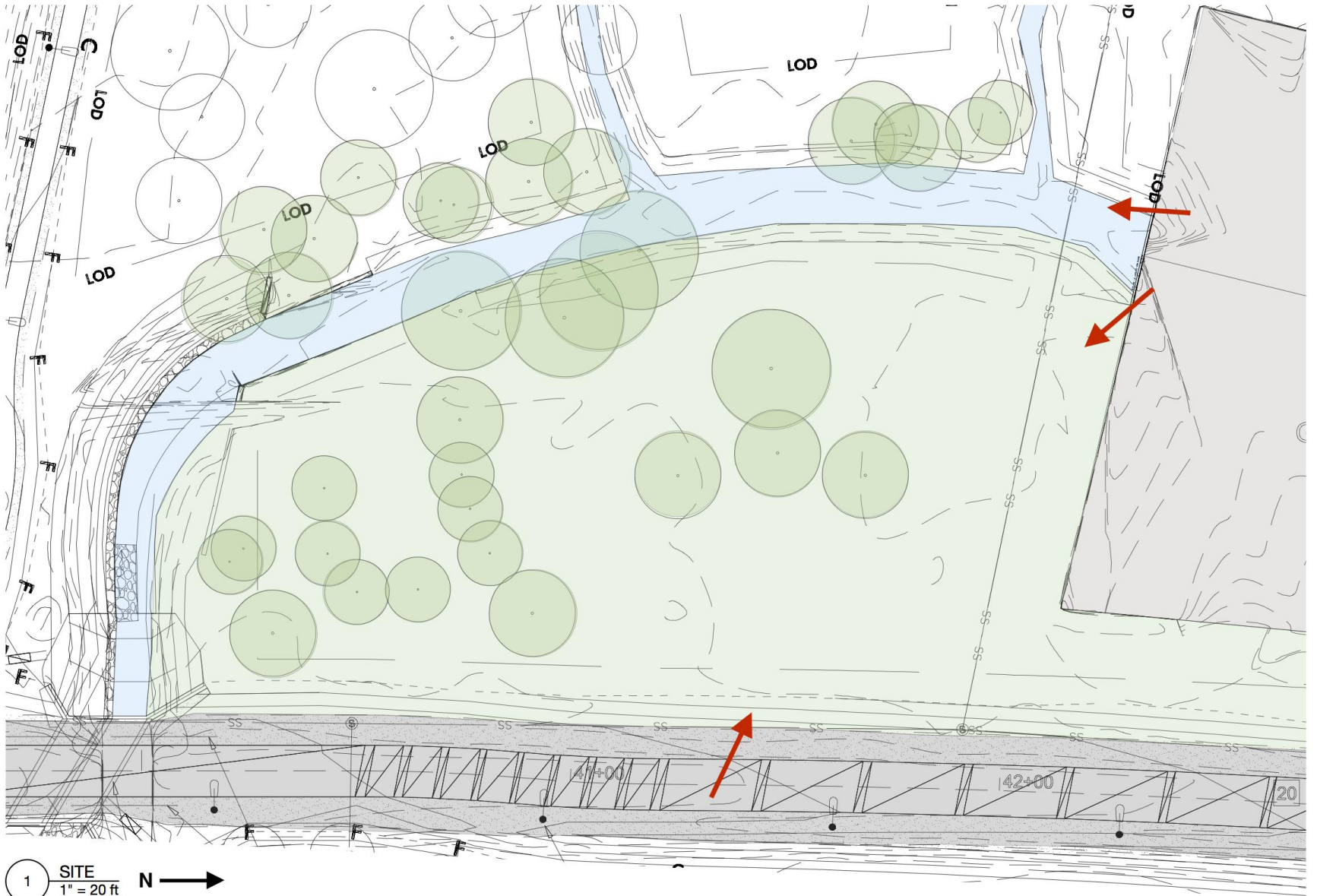
1 SITE
1" = 20 ft N →





1 SITE
1" = 20 ft N →





1 SITE
1" = 20 ft N →































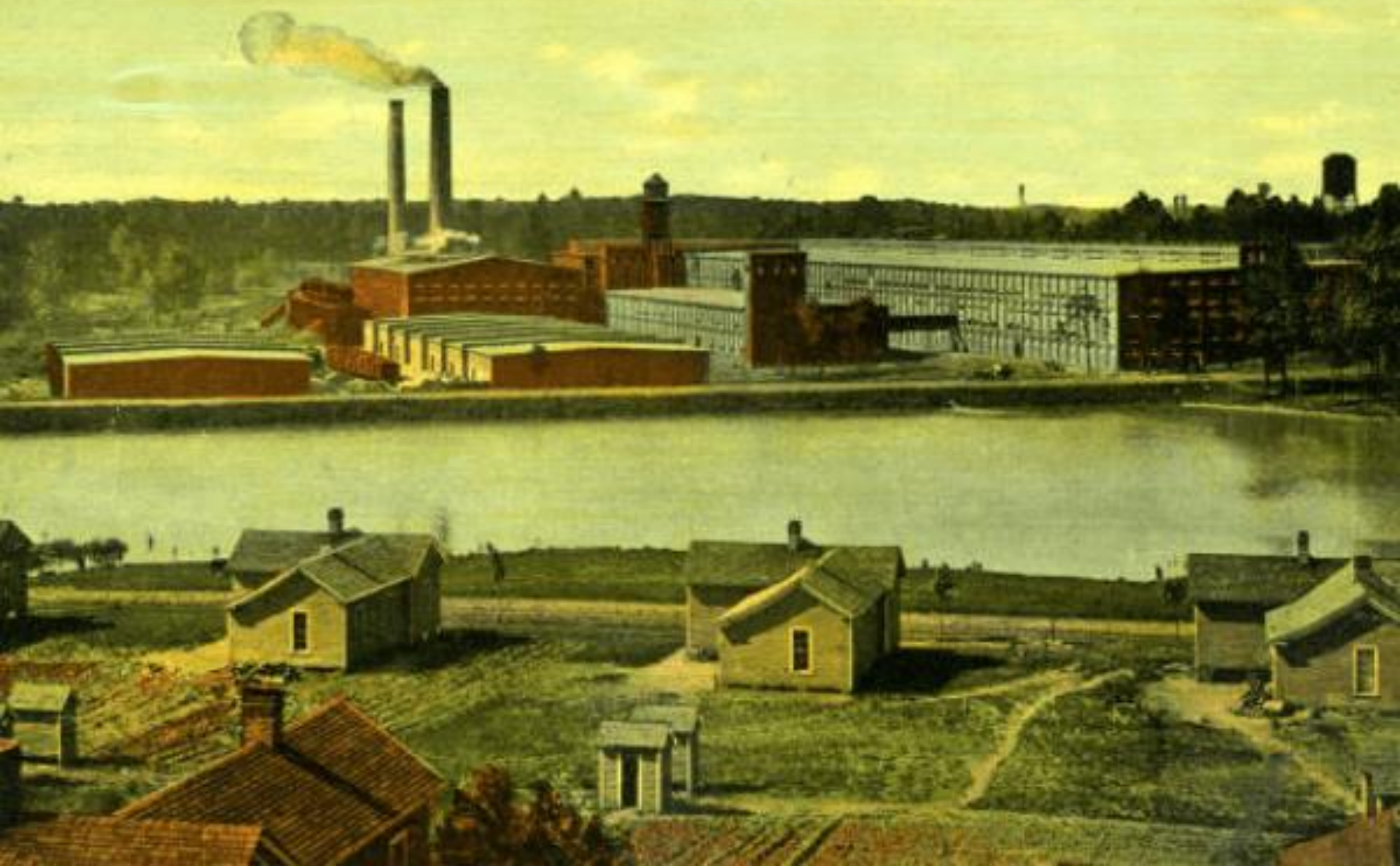






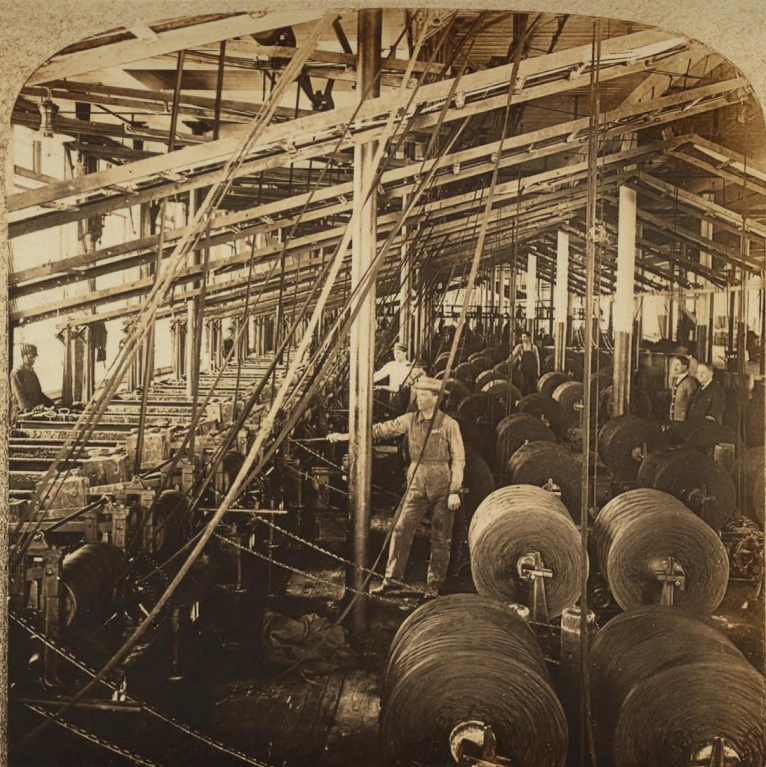
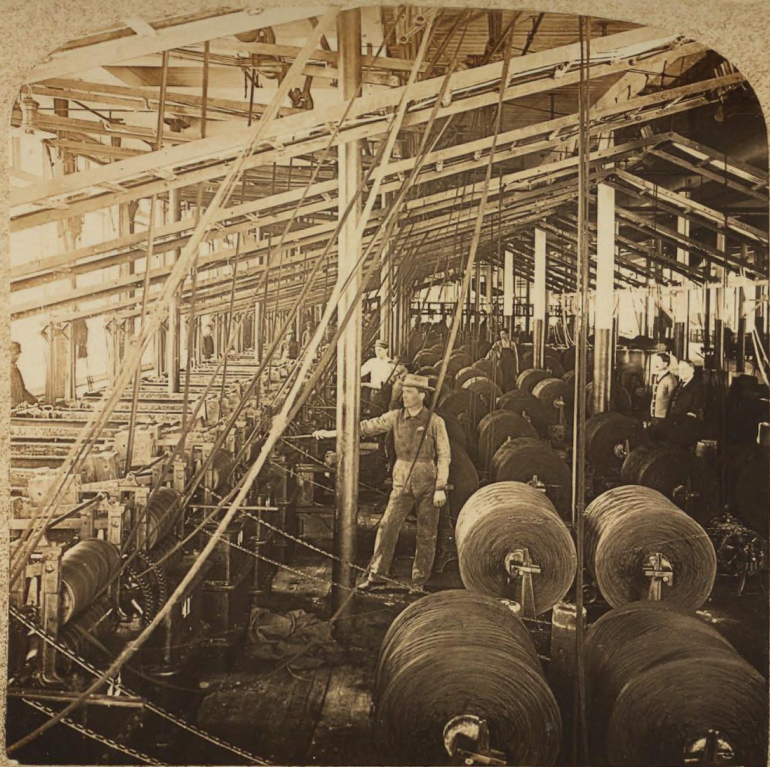


White Oak Cotton Mills, Greensboro, N. C.





H. C. WHITE CO., CHICAGO, NEW YORK, LONDON.
GEN'L OFFICE & WORKS N. BENNINGTON, VT., U. S. A.



"PERFECT" STEREOGRAPH. (TRADE MARK.)
SELF-MOUNTED. PATENTED APRIL 14, 1903.

11. Dye House, White Oak Cotton Mills, Greensboro, N.C.
COPYRIGHT 1909 BY H. C. WHITE CO.











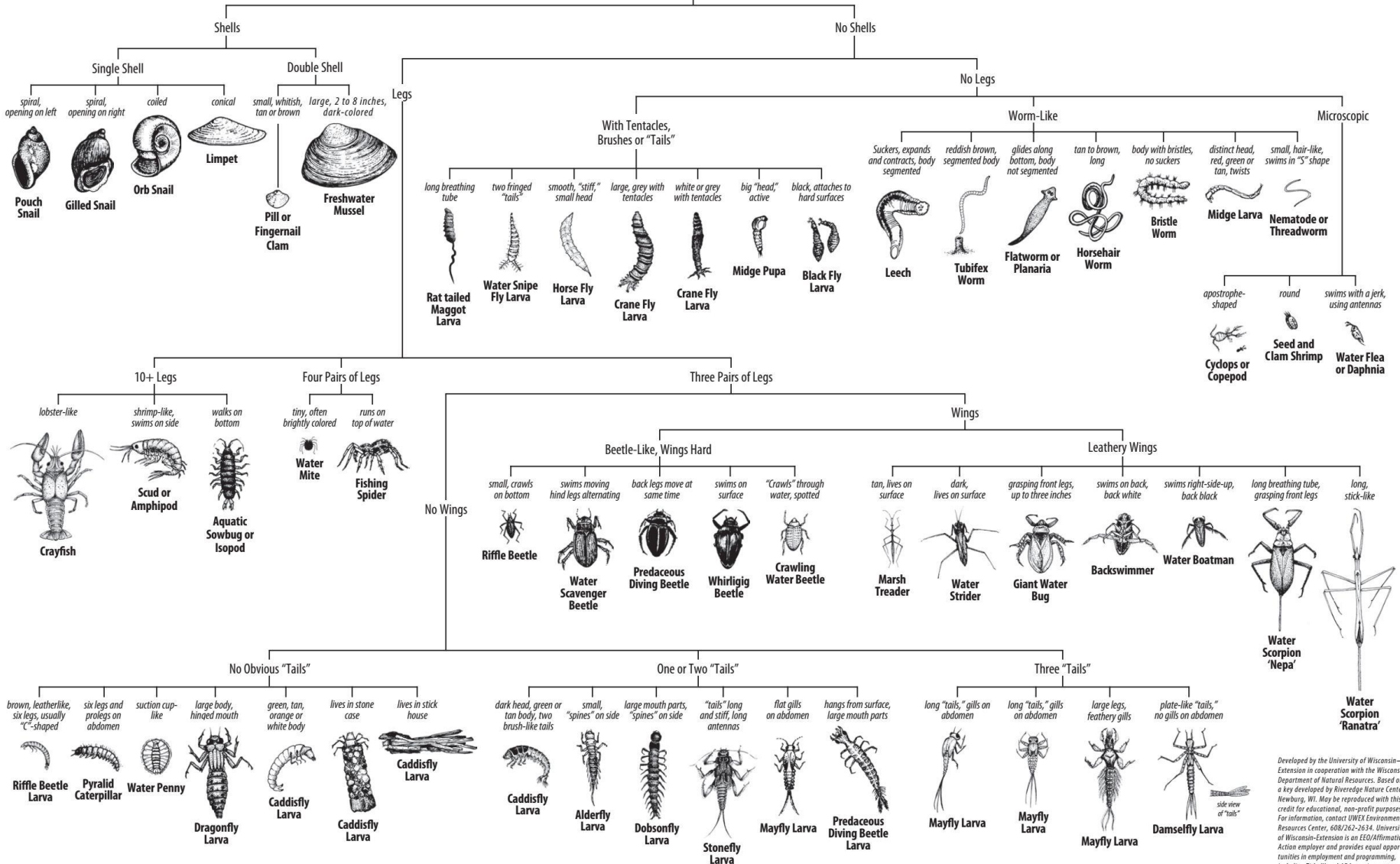






Key to Macroinvertebrate Life in the River

(Sizes of illustrations are not proportional.)



Developed by the University of Wisconsin-Extension in cooperation with the Wisconsin Department of Natural Resources. Based on a key developed by Riveredge Nature Center, Newburg, WI. May be reproduced with this credit for educational, non-profit purposes. For information, contact UWEX Environmental Resources Center, 608/262-2634. University of Wisconsin-Extension is an EEO/Affirmative Action employer and provides equal opportunities in employment and programming, including Title IX and ADA requirements.

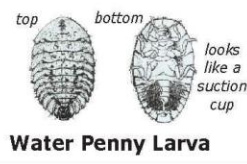
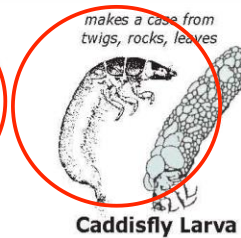
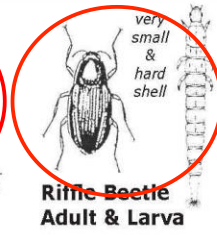
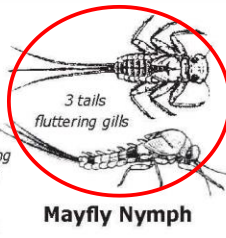
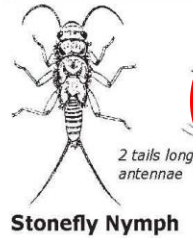




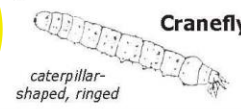
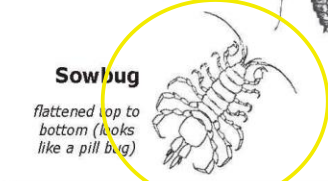
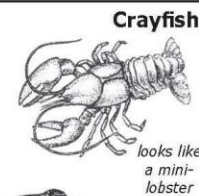
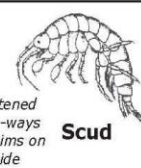
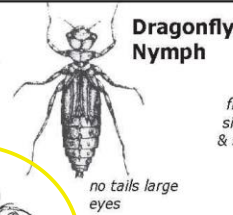
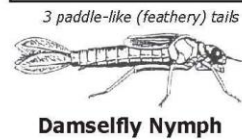


Macroinvertebrate Identification Key

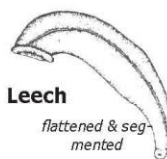
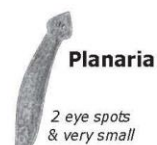
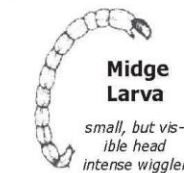
GROUP 1 – Very Intolerant of Pollution



GROUP 2 – Moderately Intolerant of Pollution



GROUP 3 – Fairly Tolerant of Pollution



GROUP 4 – Very Tolerant of Pollution

